

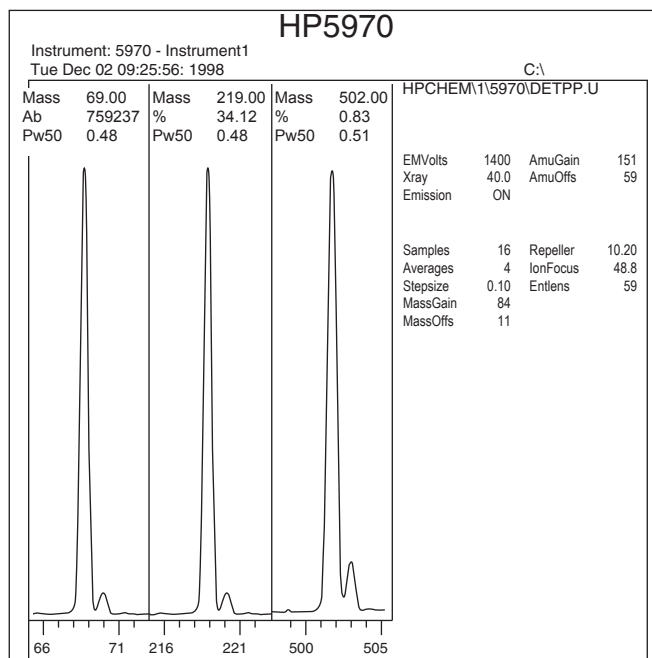
ACTIVE FILM Multiplier® for the Agilent Technologies 5970 MSD

All ETP ACTIVE FILM Multipliers® from SGE have been developed to exhibit:

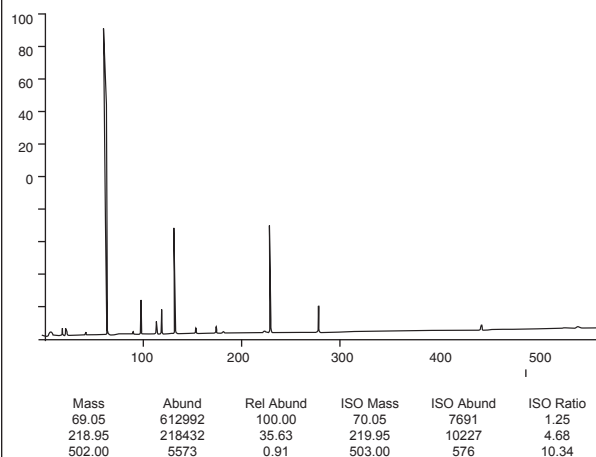
- Unsurpassed Sensitivity
- Unrivalled Linearity and Dynamic Range
- Unequaled Operational Lifetime
- Uncompromised Ease of Installation.

The model 14511 detector from ETP has been specifically designed to retrofit the Agilent Technologies 5970 MSD GC-MS system. The 14511 is completely self contained and plug-compatible with the original equipment. No special mounting assemblies or other hardware is required.

Incorporating sophisticated state of the art ion optics and unique discrete-dynode construction, the 14511 is guaranteed to meet or exceed all instrument specifications. Typical autotune results are shown in the box below.



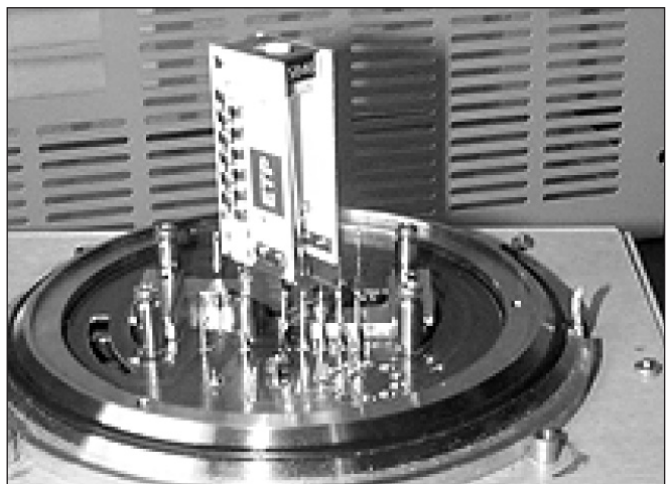
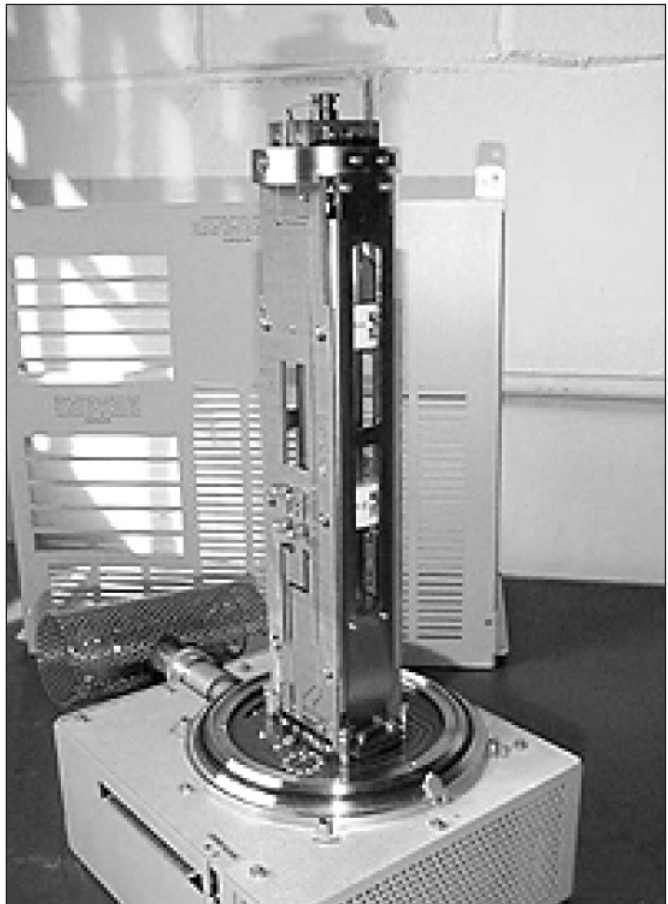
Scan: 10.00 - 520.00 Samples: 16 Thresh: 100 Step: 0.10
160 pesaks Base: 69.05 Abundance: 612992



PRODUCT DATA

Installation or replacement of the 14511 takes only about 20 minutes once the mass spectrometer is cooled and vented to atmosphere. Refer to the photograph at right of to your instrument documentation for assistance.

1. Cool and vent the mass spectrometer according to instructions provided with the instrument.
2. Follow instructions in the instrument documentation for removal of the analyzer assembly and place the assembly on a clean work surface.
3. Remove the four housing baseplate screws (two on each side) and remove the analyzer housing. This will expose the electron multiplier as shown in the photo.
4. Remove the two screws securing the multiplier to the mounting flange.
5. Loosen the set screws in each of the three barrel connectors attached to the multiplier contact pins and remove the multiplier by grasping the ceramic side supports.
6. Install the new multiplier by inserting the contact pins in the appropriate barrel connector (there is only one possible orientation). Tighten the set screws.
7. Replace and tighten the multiplier mounting screws.
8. Replace the analyzer housing and ensure that the seven metallized tracks of the housing surface align with the seven spring clips on the base.
9. Reinstall the analyzer housing in the instrument and begin the pump down procedure.



ETP electron
multipliers

ETP Electron Multipliers

ABN: 35 078 955 521
Address: 31 Hope Street,
Melrose Park NSW 2114
Australia
Tel: +61 (0)2 8876 0100
Fax: +61 (0)2 8876 0199
Email: info@etp-ms.com
Web: www.etp-ms.com